



LONDON LOW EMISSION
CONSTRUCTION PARTNERSHIP

10th July 2018

SUPPORTED BY
MAYOR OF LONDON



THE ROYAL BOROUGH OF
**KENSINGTON
AND CHELSEA**



10:30	Welcome and introductions	Frances Evans
10:35	Review of previous meetings minutes	Frances Evans
10:40	LLECP Project overview	David Green
10:50	LLECP work update	David Green / Daniel Marsh
11:00	“Best in Class” document update	David Green
11:20	Air Quality/NRMM compliance funding models	All
11:50	AOB / Date of next meeting	All
12:00	Finish	All



LONDON LOW EMISSION
CONSTRUCTION PARTNERSHIP

Phase 1: 2014-16
Phase 2: 2016-19

Industry Outreach

- Raising awareness of industry impacts on local air quality
- Encourage uptake of 'cleaner' mitigation measures
- Present case studies with cost benefit for low emission solutions

Testing

- Measure 'real world' emissions
- Emission reduction trials
- Improve pollution monitoring and quality of data

NRMM

- LEZ enforcement
- Policy support
- NRMM database

LLECP Key Project Deliverables 2018 / 19

1. End of funding cycle outputs:
 - a) Construction Industry 'Best in Class' Guidance Document
 - b) Seminar
2. Continue...
 - a) Outreach meetings
 - b) Existing case studies (Lewisham CLP)
 - c) New case studies (Thames Tideway, HS2)
 - d) LA and industry support to NRMM

Key Progress since last meeting

- ⦿ Best in Class Guidance Document
- ⦿ Seminar
- ⦿ Outreach
- ⦿ Existing Projects:
 - Lewisham Construction Logistics Plan
- ⦿ New Case Studies:
 - HS2 PEMS / Mini PEMS / Exposure Project
- ⦿ NRMM Support

Guidance Document

- ‘Best in Class’ Guidance Document for local authorities. This will aim to
 - condense all the information and learnings from both rounds of the LLECP
 - Provide information for LA officers (planning and environment)
 - Provide information for industry seeking to reduce emissions
 - publish in one of the Institute of Civil Engineering Journals.
 - integrate this into the website
 - Delivered in Feb 2019
 - Remain a live document (updated through additional funding?)

*Best in
Class*



Introduction

- Purpose of this guidance document/how to use
- What is the LLECP - A brief overview of the project (historical/funding etc)
- Aims and Objectives outline purpose of the project
- LLECP Members
- **Impact of construction industry on local air quality**
 - Why tackle construction emissions?
 - LAEI 2013/GLA projected EI
 - What are the pollutants of concern?

Best in Class Approaches

Monitoring

- Indicative monitors (limitations)
- MCERTS
- Where to site monitors
- Best in class calibration/flow checks/inlet temperatures/co-location
- Low concentration/weekend comparison

Site boundary threshold

- Historical
- HS2 work
- What to do when there is an exceedance (flow chart for LA's/developers)
- Template report

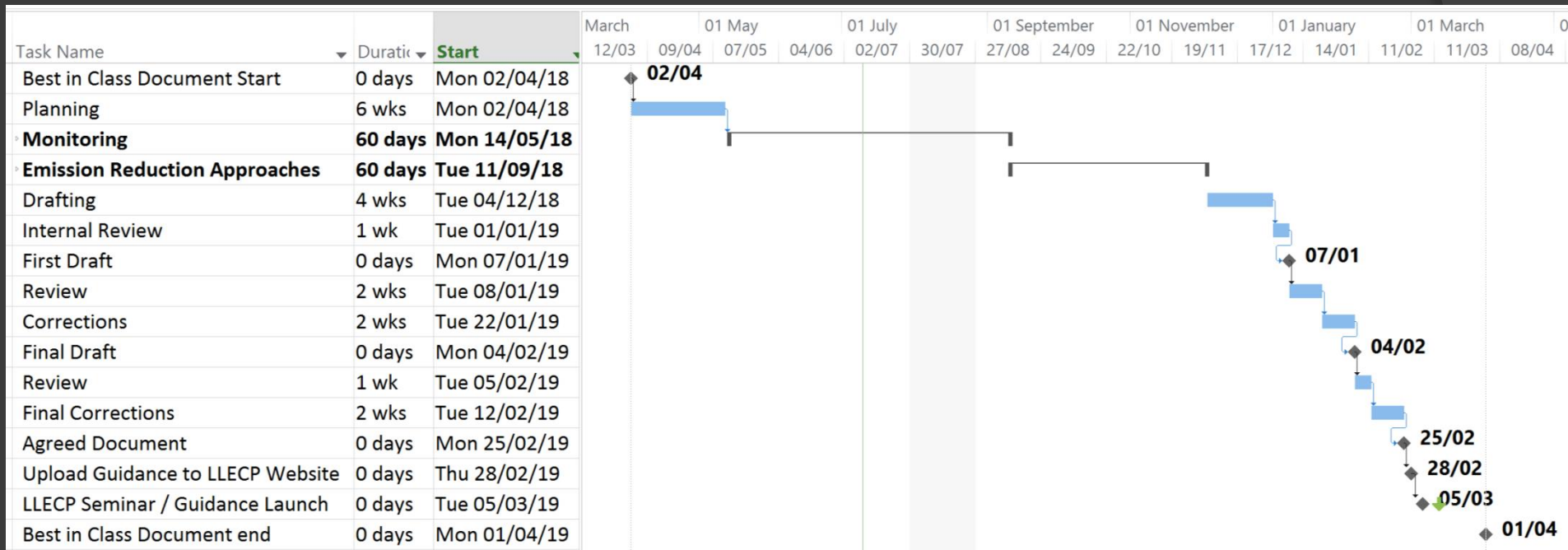
Emission Reduction Approaches - Fugitive

- ① Dust suppressants
 - CMA Chemical dust suppressants
 - Water
 - Geotextiles
 - Gorilla snot type applications
 - Seeding
 - Wind barriers
- ① Street Sweeping efficacy

Emission Reduction Approaches - NRMM

- Emission stages – brief history
- How to find/read emission plates
- ⦿ London NRMM LEZ Policy
 - Brief overview with links to GLA
 - nrmm.london
 - Future policy milestones
- ⦿ Off grid power
- ⦿ Diesel generators
 - Hybrid power
 - Retrofit SCR DPF
- ⦿ Early site electrification (UKPN flow chart of who/when to contact and how to accelerate process)
- ⦿ Other power – hydrogen/solar/gas
- ⦿ Diesel fuel additives
- ⦿ Retrofit

Project Plan



Any other business?

- ⦿ NRMM training event
 - 9th July 2018, City Hall
- ⦿ Date of next meeting