



**LONDON LOW EMISSION**  
CONSTRUCTION PARTNERSHIP

*24<sup>th</sup> April 2018*

SUPPORTED BY  
**MAYOR OF LONDON**



THE ROYAL BOROUGH OF  
**KENSINGTON  
AND CHELSEA**



Supported by



<b>10:30</b>	<b>Welcome and introductions</b>	<b>Frances Evans</b>
<b>10:35</b>	<b>Review of previous meetings minutes</b>	<b>Frances Evans</b>
<b>10:40</b>	<b>LLECP Project overview</b>	<b>David Green</b>
	<b>Deliverables for final year of LLECP 2018/19</b>	
<b>10:45</b>	<b>LLECP Project deliverables</b>	<b>David Green</b>
<b>10:55</b>	<b>Group discussion to ensure deliverables meet LA needs</b>	<b>All</b>
	<b>MEASURES PROGRAMME</b>	
<b>11:40</b>	<b>LLECP work update</b>	<b>Daniel Marsh</b>
<b>11:50</b>	<b>LLECP PhD</b>	<b>David Green</b>
<b>11:55</b>	<b>AOB / Date of next meeting</b>	<b>All</b>
<b>12:00</b>	<b>Finish</b>	<b>All</b>



**LONDON LOW EMISSION**  
CONSTRUCTION PARTNERSHIP

Phase 1: 2014-16  
Phase 2: 2016-19

## Industry Outreach

- Raising awareness of industry impacts on local air quality
- Encourage uptake of 'cleaner' mitigation measures
- Present case studies with cost benefit for low emission solutions

## Testing

- Measure 'real world' emissions
- Emission reduction trials
- Improve pollution monitoring and quality of data

## NRMM

- LEZ enforcement
- Policy support
- NRMM database

# Key Progress since last meeting

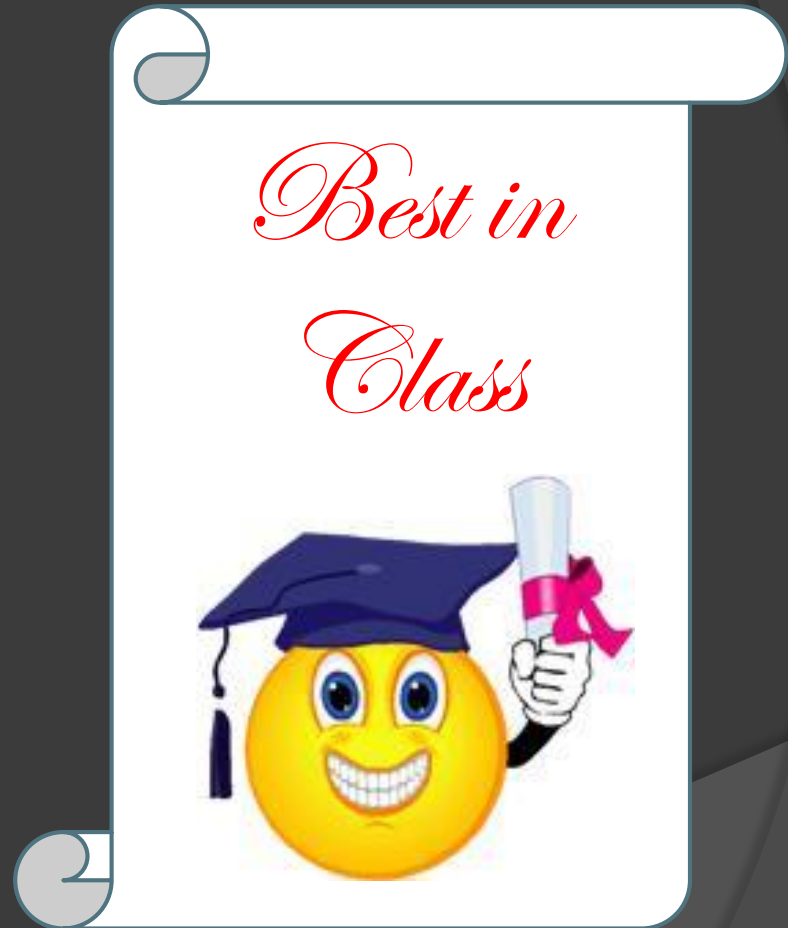
- NRMM PEMS work still ongoing with MACE at Battersea Power Station
  - This round included excavators, dumpers, cranes and a concrete pump
- HS2 Emission proposal succeeded in first round of innovation board approval
- Evelyn Street Construction Logistics Plan
- Continued outreach

# LLECP Key Project Deliverables 2018 / 19

1. End of funding cycle outputs:
  - a) Construction Industry 'Best in Class' Guidance Document
  - b) Seminar
2. Continue...
  - a) Outreach meetings
  - b) Existing case studies (Lewisham CLP)
  - c) New case studies (Thames Tideway, HS2, Mecalac)
  - d) LA and industry support to NRMM

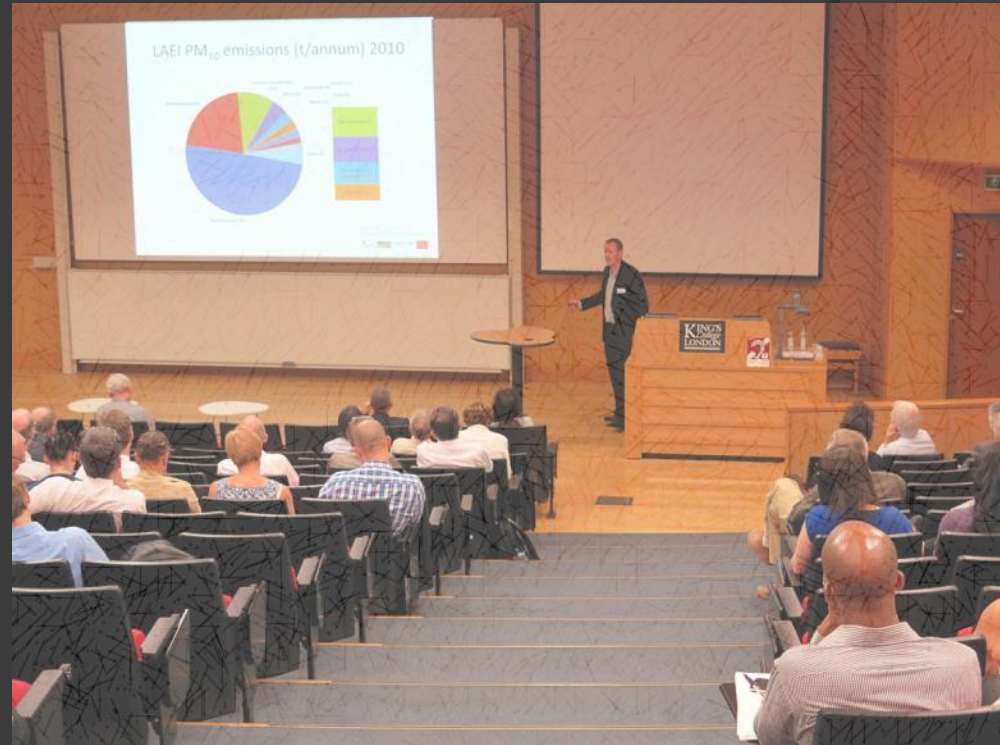
# Guidance Document

- 'Best in Class' Guidance Document for local authorities.
- This will aim to
  - condense all the information and learnings from both rounds of the LLECP
  - possibly publish in one of the Institute of Civil Engineering Journals.
  - integrate this into the website
  - Delivered in Feb 2019



# LLECP Seminar

- ⦿ Seminar focused on LAs rather than industry.
- ⦿ Present the case studies
- ⦿ Outline the industry engagement
- ⦿ March 2019?





# Discussion Points

- ◉ Checklists to allow easy handover of NRMM responsibilities to new staff
- ◉ SOPs
- ◉ Guides
- ◉ NRMM toolkit
- ◉ Input from compliance officers
- ◉ Where?
- ◉ External speakers – who?
- ◉ As part of LAQN Seminar?

**Guidance Document**

**Seminar**



# Abatement Measures Programme

# LLECP work update

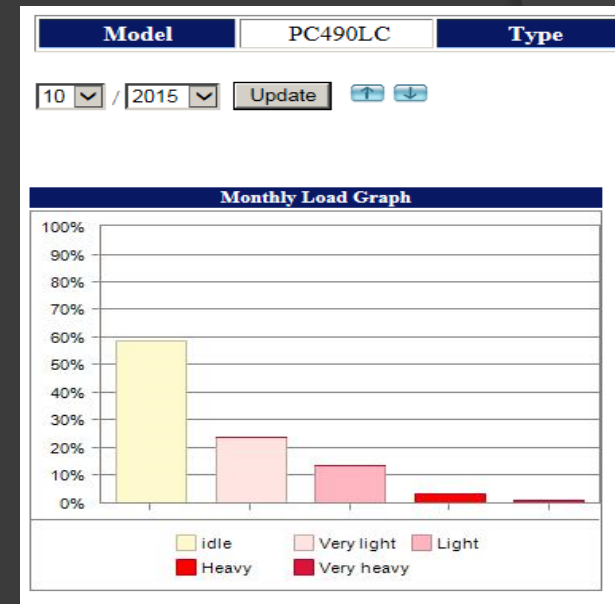
- Full site NRMM emissions inventory
  - Real world measurement using 'mini-PEMS' over a wide range of machines
  - Creates baseline with scientific evidence
  - Use for modelling future intervention impacts
  - Correlate telematics/HEMS activity data

# Worker exposure risk assessment

- ⦿ Worker personal exposure assessment
  - Real time black carbon measurement used with personal monitors, GPS and workers diary
  - Compares different construction roles and highlights areas of greatest risk
- ⦿ Indoor/outdoor NRMM
  - Highlights risk to workers of NRMM emissions when used in poorly ventilated areas
- ⦿ Machine cabin exposure assessment
  - Impact of cabin filtration systems vs open machines

# Engine telematics – a better way to understand & improve operator behaviour?

- Telematics included on larger machines (>14t) but increasingly full NRMM fleet
- Often only installed on the newest (and therefore cleanest) machines
- Engine activity and operator behaviour, current industry focus on:
  - Tracking machine location/Anti-theft
  - Monitoring hours/fuel use
  - Scheduling routine maintenance/fault codes
  - Excessive idling hours (warranty penalties)
- Monitoring whole project improvements and cost benefit
- Correlated with ‘mini-PEMS’ emission measurements
- Developing eco-driver training programmes /Operator incentives
- What else can we learn?



**Smarter machines are coming!**

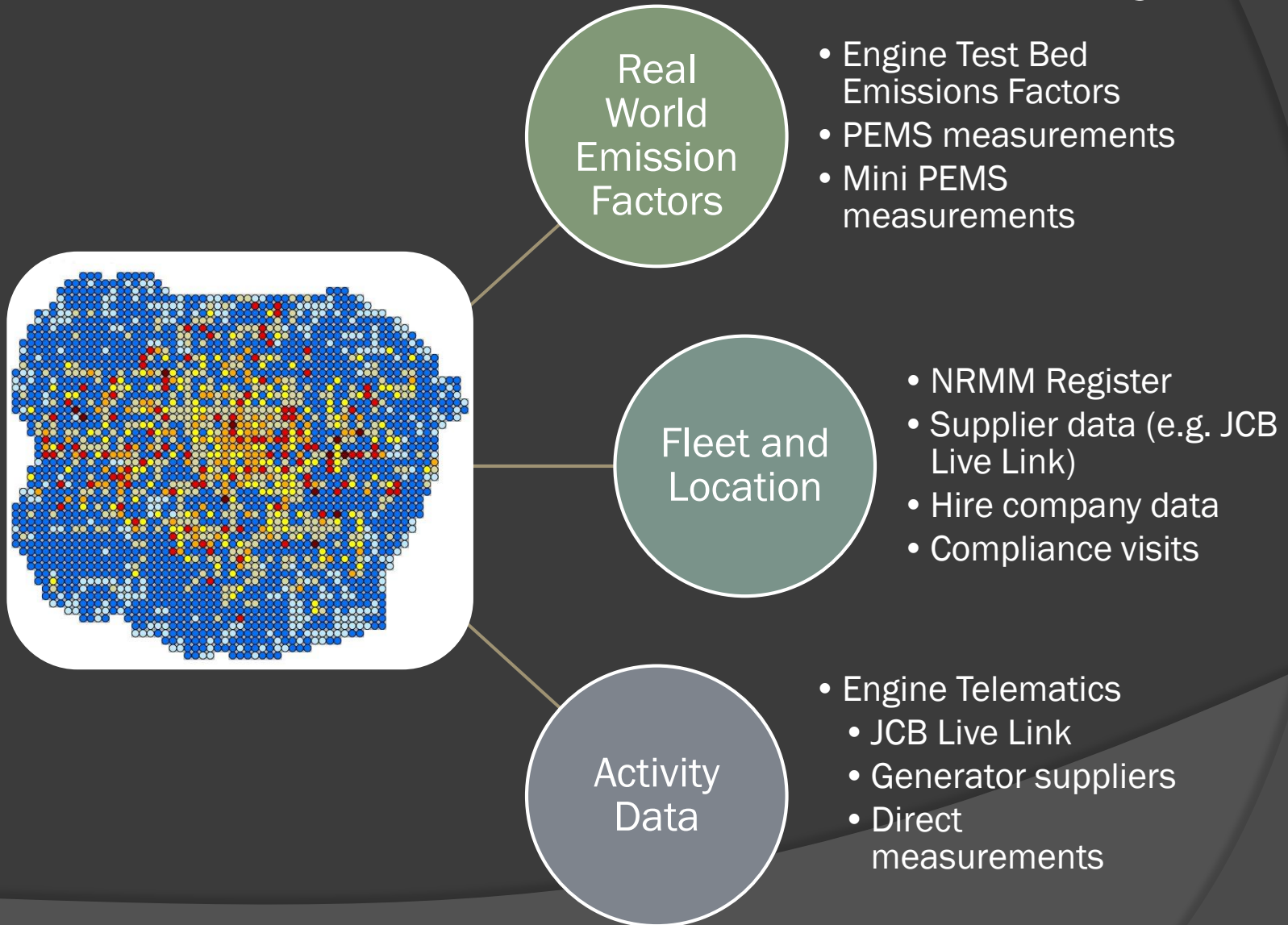
# After-exhaust Retrofit Technology

- Advanced retrofit '*beyond Stage IIIB*'
- Generator SCR DPF retrofit

Technology	Emission Reduction Potential		
	Particle Mass	Particle Number	Nitrogen oxides
Wall-Flow Filter	> 95%	> 99%	< 5%
Partial Flow Filter	30 - 60%	No data	< 5%
Diesel Oxidation Catalyst	< 25%	No impact	< 5%
Selective Catalytic Reduction	< 10%		> 70% (up to 95%)
Combined DPF+SCR	> 95%	> 99%	> 70% (up to 95%)

# LLECP PHD UPDATE

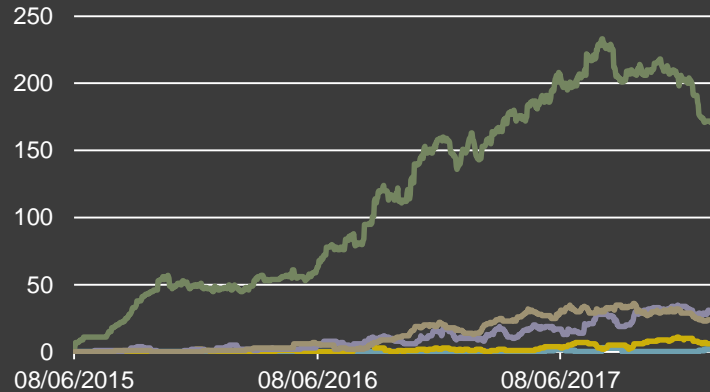
# NRMM Bottom Up Inventory



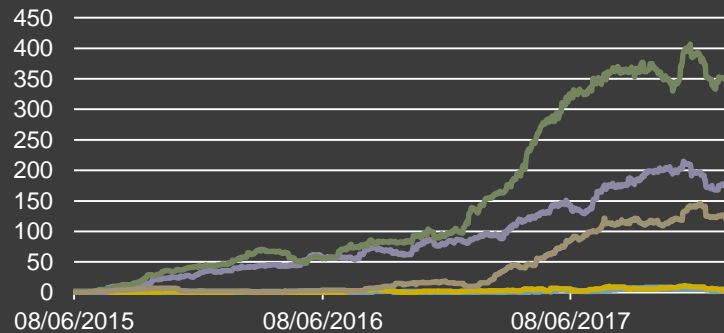


# nrmm.london – measuring success

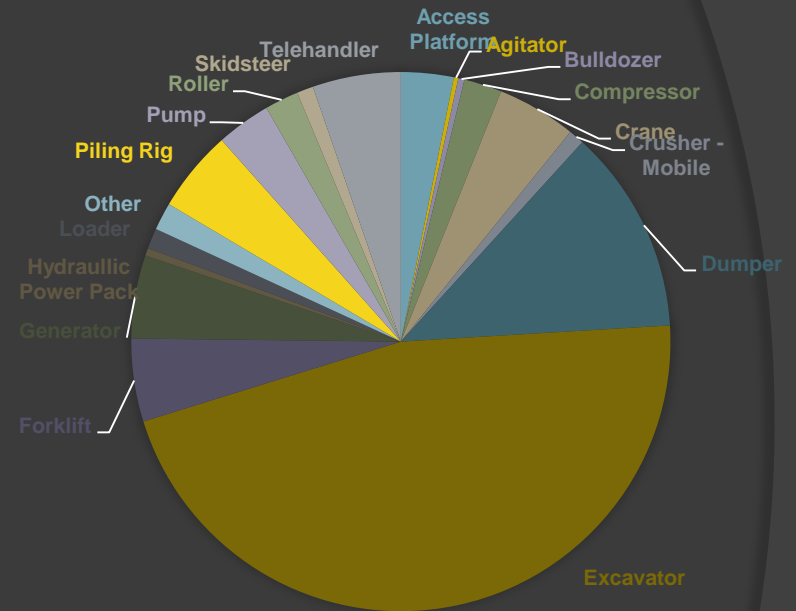
Active Machinery - CAZ/CW



Active Machinery - Greater London



— EU\_Stage\_I\_Total    — EU\_Stage\_II\_Total  
— EU\_Stage\_IIIA\_Total    — EU\_Stage\_IIIB\_Total  
— EU\_Stage\_IV\_Total



967 registered sites  
 3,743 pieces of registered NRMM

# Types of NRMM tested



**Generators**

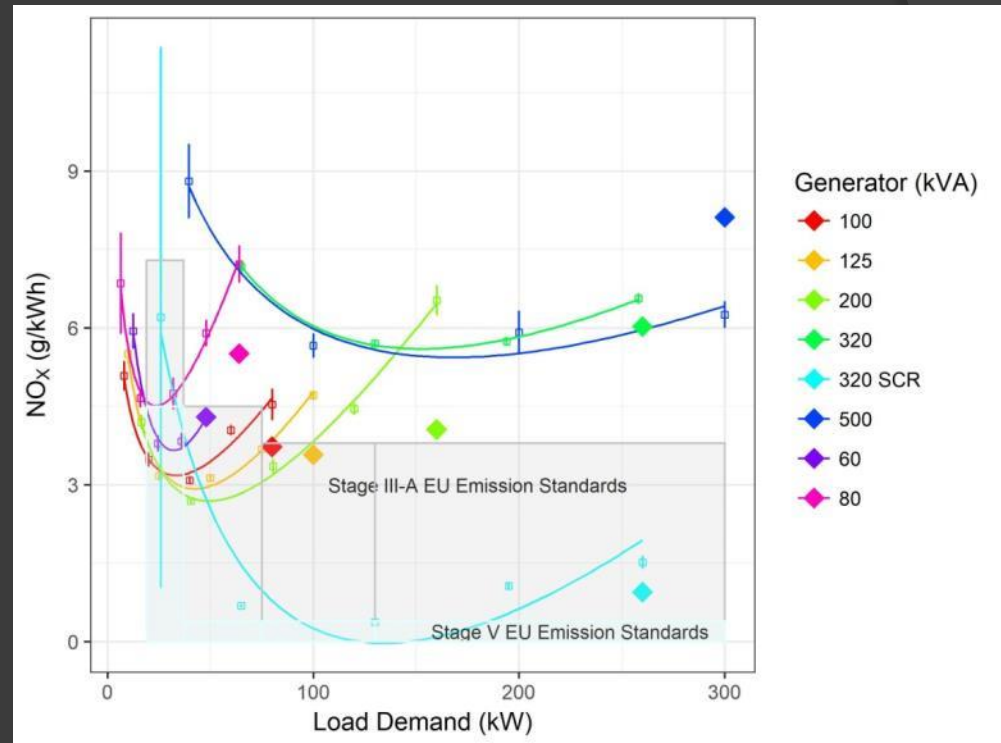
**Excavators**



**Telehandlers**

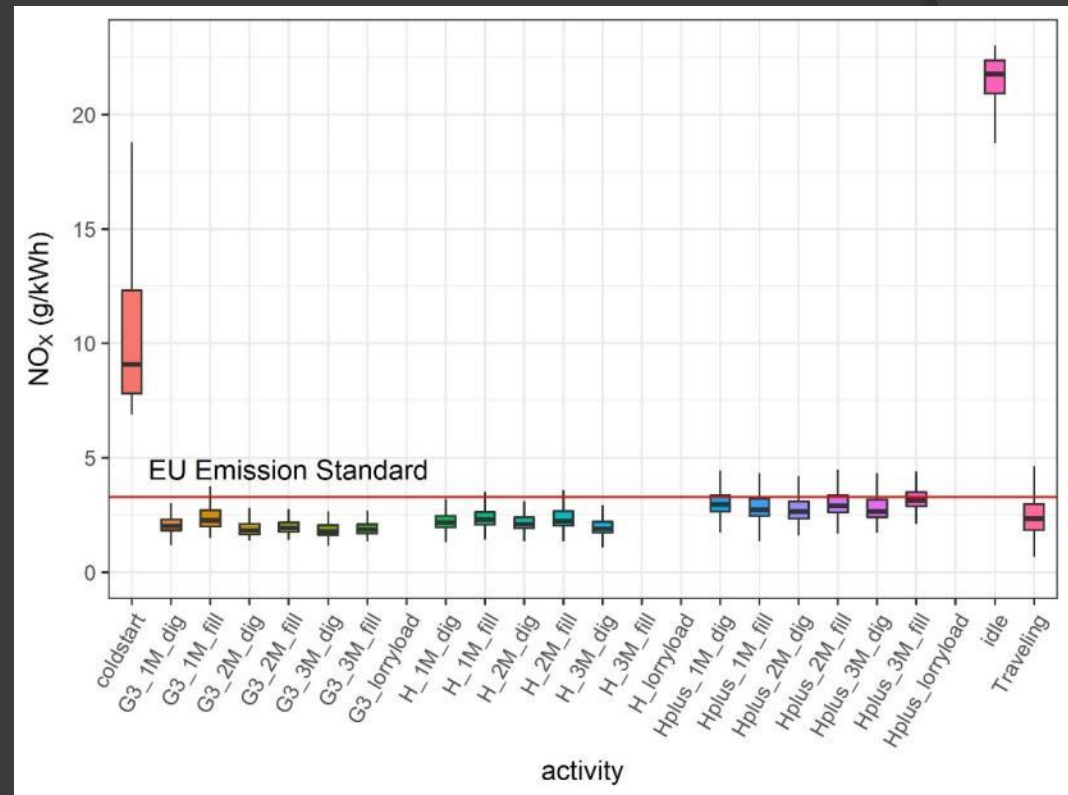
# Generator Results:

- Generator emission factors determined using the ISO standards.
- 7 different types of generators.
- All Stage III-A engines



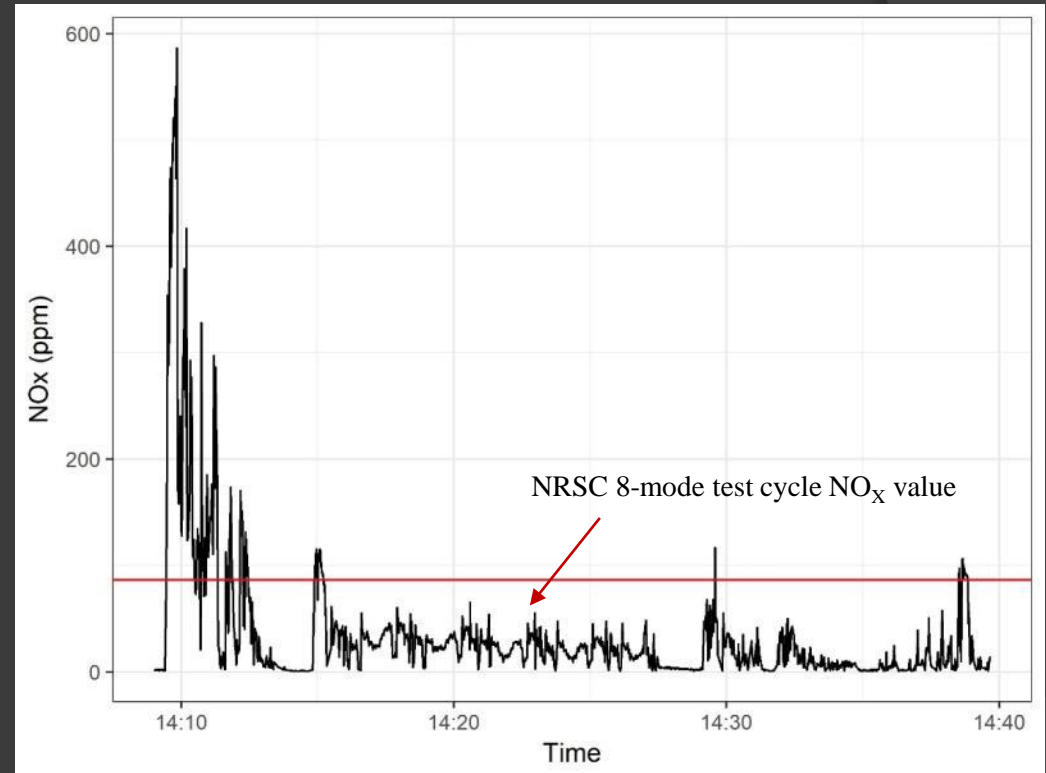
# Excavator activity analysis:

- Excavator results based on a single test.
- Different types of activity performed by the excavator.
- Stage III-B engine.



# Telehandler mini-PEMS data:

- Preliminary results from the mini-PEMS test.
- Stage IV engine.
- Single-activity test cycle.



# Future NRMM to be tested

- Excavators
- Dumpers
- Cranes
- Forklifts
- Loaders
- Rigs
- Pumps



# Any other business?

- ⦿ NRMM training event
  - 9<sup>th</sup> July 2018, City Hall
  
- ⦿ Date of next meeting
  - Tuesday 10 July, 10.30-12pm,  
Camden offices, 5 Pancras Square